

# KENYA HOMES EXPO

JUNE 11<sup>TH</sup> - 14<sup>TH</sup>, 2026

THE BIGGEST  
HOMES SHOW  
IN EAST &  
CENTRAL AFRICA

39<sup>th</sup> KENYA  
HOMES  
EXPO

DIAMOND SPONSOR



# TRANSFORM YOUR LIVING



# CATALOGUE



# HOMEfix

You mention it. We fix it.

## ROBUST STRUCTURE

*for* LONG LASTING PROJECTS

• Build • Repair • Renovate

General  
Commodity  
Trading  
Company



Call us **0721 325 902**

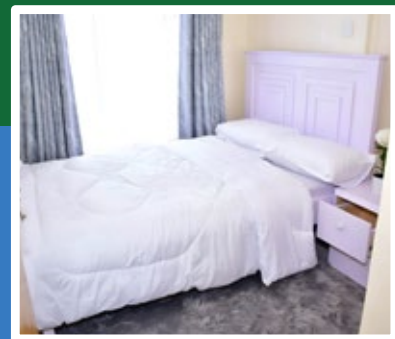
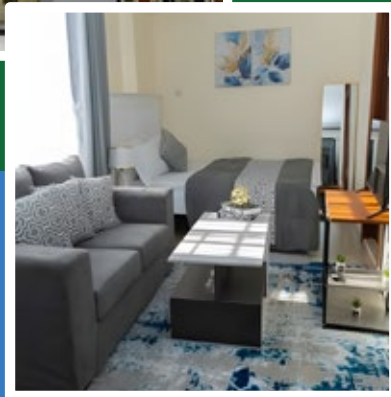
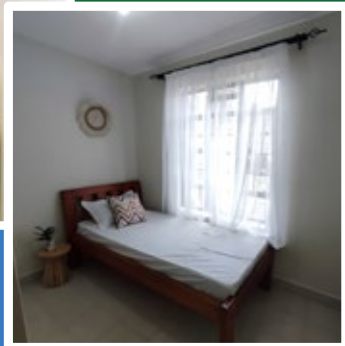
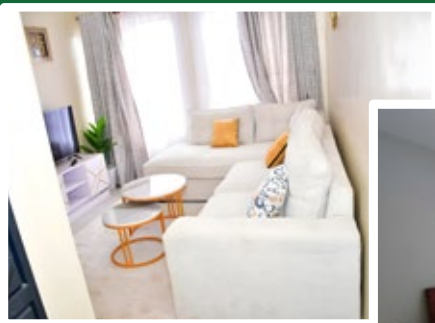
6th Floor, New Rehema House, Rhapta Road - Westlands  
P.O. Box 66331 - 00800, Nairobi - Kenya  
info@security24.co.ke | www.security24.co.ke

**boma  
yangu**



Affordable  
Housing Board  
*Makao Bora, Jukumu Letu*

**Living the Dream!  
Delivering Dignity.**



Dial **\*832#** or visit [www.bomayangu.go.ke](http://www.bomayangu.go.ke)

Prism Towers, 23rd Floor 3rd Ngong Avenue, P. O. Box 27521 – 00100 Nairobi

Tel: 0700 832 832 / 0733 832 832 email: [info@affordablehousingboard.go.ke](mailto:info@affordablehousingboard.go.ke)

## NOTE FROM THE EXECUTIVE CHAIRMAN



**Mr Daniel Ojijo Executive Chairman,  
Kenya Homes Expo**

### **Welcome to the 39th Kenya Homes Expo.**

It gives me immense pleasure to welcome you to yet another edition of the Kenya Homes Expo, the region's premier housing, construction, real estate, and built environment exhibition. For over two decades, and through two successful editions every year, the Kenya Homes Expo has remained a trusted platform that brings together industry leaders, innovators, investors, professionals, policymakers, and consumers to shape the future of how we live, work, build, and invest.

As we celebrate the 39th edition, we reflect

“ *The Expo provides an ideal platform to showcase cutting-edge innovations in housing; green energy; smart technologies; interior design; construction solutions; affordable housing; property investment among others* ”

## TRANSFORM YOUR *Living*

with pride on the Expo's remarkable journey and its positive contribution towards the growth and transformation of the built environment across Kenya and the wider East African region. Through strategic partnerships, business networking, knowledge sharing, and market access opportunities, the Expo has facilitated millions of shillings in investments, promoted home ownership, supported innovation, and strengthened linkages across the entire real estate and construction value chain.

This year's timely theme, "Transform Your Living," resonates strongly with the evolving needs of today's market. As consumers increasingly seek smarter, greener, more efficient, and sustainable living solutions, the Expo provides an ideal platform to showcase cutting-edge innovations in housing, green energy, smart technologies, interior design, construction solutions, affordable housing, property investment, financing, security systems, water solutions, infrastructure development, and lifestyle enhancement.

Visitors will have the opportunity to engage with a wide variety of market segments including property developers, financiers, mortgage providers, contractors, architects, engineers, quantity surveyors, interior designers, technology providers, renewable energy companies, manufacturers, suppliers, property managers, insurance providers, legal experts, government agencies, and many other stakeholders driving growth within the sector.

I extend our sincere appreciation to our strategic partners and professional bodies including the Architectural Association of Kenya (AAK), Institution of Surveyors of Kenya (ISK), Institute of Quantity Surveyors

of Kenya (IQSK), Kenya Property Developers Association (KPKDA), Town and County Planners Association of Kenya (TCPAK), Kenya Green Building Society (KGBS), and other industry stakeholders whose continued support has contributed immensely to the success and credibility of the Expo over the years.

Special gratitude goes to our silver Sponsors, the Affordable Housing Board (AHB) through the Boma Yangu Programme, whose commitment to advancing affordable housing continues to play a critical role in supporting the Government's housing agenda and expanding homeownership opportunities for Kenyans.

I also wish to thank all our exhibitors, sponsors, partners, speakers, delegates, media partners, and visitors for your unwavering support and participation. Your contribution continues to make the Kenya Homes Expo the largest and most influential homes and real estate exhibition in Eastern and Central Africa.

As you explore the exhibition, attend presentations, engage with industry experts, and discover innovative products and services, I encourage you to seize the many opportunities available to connect, collaborate, invest, and transform your living.

On behalf of the entire Kenya Homes Expo team, I wish you a productive, insightful, and rewarding Expo experience.

*Thank you and welcome.*

**Daniel Ojijo  
Executive Chairman  
Kenya Homes Expo**

JUNE  
11-14  
2026

} KICC



**One of the completed apartments by  
The Affordable Housing Board**

## WHO WE ARE

The Affordable Housing Board is a national government agency mandated to plan, oversee, and drive the delivery of affordable, dignified, and sustainable housing for all Kenyans.

Guided by the Affordable Housing Act, the Board provides strategic leadership and governance to the Affordable Housing Programme (AHP), the flagship initiative that seeks to close Kenya's housing deficit and promote inclusive urban development.

Through its digital platform Boma Yangu, the Board ensures transparency, efficiency, and accountability throughout the home ownership journey.

## MANDATE & LEGAL FOUNDATION

Established under the Affordable Housing Act, the Board is empowered to:

- Mobilize financing for affordable housing projects.
- Approve and supervise housing projects implemented under the Programme.
- Ensure adherence to quality, sustainability, and national housing standards.
- Provide policy direction to developers, partners, and county governments.
- Guarantee fair, transparent homeowner allocation processes through Boma Yangu.

**P.O Box 27521-00100, Nairobi**  
**Email: [info@affordablehousing.go.ke](mailto:info@affordablehousing.go.ke)**  
**Cell: 0722 832832/0733 832832**

#Transform  
YourLiving

www.kenyahomesexpo.com

39<sup>th</sup> KENYA  
HOMES  
EXPO

NEXT EVENT  
DATES  
NOV. 19TH - 22ND  
2026

## EXHIBITOR INDEX

### EXHIBITOR

### EXHIBITOR

### EXHIBITOR

- 1 ABRIT GLASS LIMITED
- 2 ABSA
- 3 AFFORDABLE HOUSING BOARD
- 4 AFRICA REIT
- 5 ALBA GARDEN
- 6 AMEEY HOMES
- 7 ANG CONCRETE
- 8 ASHUT ENGINEERING
- 9 BONFIRE ADVENTURES
- 10 COMEX
- 11 COMPLY INDUSTRIES
- 12 DEFENDRE SOLUTIONS LIMITED
- 13 DGT UNITED TECHNOLOGIES
- 14 DIAMOND BAY (HENBON)
- 15 EMKAY BUILDERS
- 16 EVER EXCEED
- 17 FDC CONSTRUCTION
- 18 FLOOR MATTER
- 19 GEMINIA INSURANCE
- 20 GLITTERLONG DEVELOPMENT COMPANY LIMITED
- 21 GRADE ONE REAL ESTATE
- 22 GRADE ONE REALTORS LTD

- 23 GT BANK
- 24 I-CLEAR
- 25 I-HOMES KENYA LIMITED
- 26 JANI COSMETICS
- 27 KAHO ASSET HOLDINGS
- 28 KARUGURU HOLDINGS
- 29 KCB
- 30 KENYA AIRPORT PARKING SERVICES (KAPS)
- 31 KINGDOM BANK
- 32 MOTHERLAND CONCRETE
- 33 MRM
- 34 MUTHOKINJU PAINTS
- 35 NDATANI ENTERPRISES
- 36 ONEW INVESTMENT COMPANY LIMITED
- 37 OPTIVEN GROUP
- 38 PRESTON VALLEY-EMKAY BUILDERS
- 39 ROBBEX PAINT
- 40 ROLLING CARGO LTD
- 41 ROYAL MABATI
- 42 RSUN REAL ESTATE
- 43 RUBY INTERIORS
- 44 SANLAM ALLIANZ INVESTMENT LIMITED
- 45 SCADE GROUP

- 46 SECUREX
- 47 SHUNXIN PIPE COMPANY
- 48 SIERRA HOMES
- 49 SINO WOOD
- 50 SOLIAN LTD
- 51 STAR CONCRETE
- 52 STIMA INVESTMENT
- 53 STONE CREST REAL ESTATE
- 54 SUMMIT VISTA
- 55 SUNSET PARADISE
- 56 SUPER MANUFACTURERS
- 57 SUPERIOR HOMES
- 58 TATU CITY
- 59 TETEZI HOUSE LIMITED
- 60 TRELIDOR
- 61 TSAVO
- 62 UPLUX REALTORS
- 63 VASSAY TILES
- 64 VERISPECT INSPECTIONS LIMITED
- 65 WE DO BAMBOO
- 66 WESTERN PALACE INVESTMENT LIMITED
- 67 WIRE PRODUCTS
- 68 ZIZI TECH



**1. BANGKOK HOSPITAL**  
**2 SOI SOONVIJAI 7, NEW PETCHBURI RD,**  
**HUAYKWANG, BANGKOK, THAILAND**  
**MOBILE - +66 92 4489017**

**STAND MANAGER - MR. MD. WASIUL ALAM**

Bangkok Hospital was established in 1972 as one of the first private hospital in Thailand. Over the past 48 years we have expanded our operation to become a tertiary care facility with dedicated hospital for cancer and cardiology. At Bangkok Hospital, we offer quality medical care in a comfortable caring environment; our team of doctors that care for international patients are all conversant in English and we have a staff of interpreters who can communicate in over thirty two other

languages. The hospital has been accredited by the joint commission on international accreditation (jci), the leading authority on assessing the safety and competence of international hospitals. We assure that patients/visitors can expect to experience world-class services and specialized tertiary care at Bangkok hospital.

**4. PRIME EXPO FZE**  
**INEXPO GROUP (ORGANIZER)**  
**P. O. BOX 6497, DUBAI , UNITED ARAB EMIRATES**  
**MOB - +971 55 5506187**

**STAND MANAGER - MR. INAAM SALMAN**

INEXPO GROUP is one of the leading exhibition company specialized in organizing and marketing of International Trade Exhibitions in the major countries in Africa since 2003. We organize over 18 trade exhibitions annually all over Africa such as in Kenya, Uganda, Tanzania, Ethiopia, Sudan, Nigeria, Ghana, South Africa, Cameroon, Malawi, Zambia, Zimbabwe, Botswana etc.

### The Team

**EXPO DIRECTOR:** DANIEL OJJO **TEAM LEADER:** BENIX AGOT **PROJECT DESIGNER:** PHELIX MJUMBE  
**EXPO CO-ORDINATORS:** MAFFEY GOGO, DERICK ODHIAMBO, WINNIE OMWENGA, SERAPHINE NJERI,  
KELVIN MUEMA, SHARON WANGARE

JUNE  
11-14  
2026

KICC



### ABRIT GLASS LTD

Abrit Glass Ltd. is one of Kenya's leading premier glass distributors, glass processors, glazing solutions, and LED mirrors manufactures.

Glass serves as a perfect finishing touch to well-designed spaces, be it windows, doors, bathrooms, living rooms, or bedrooms.

#### OUR CORE PRODUCTS AND SERVICES

- 1 **Mirrors** LED mirrors, framed and frameless mirrors
- 2 **Building glasses** Clear float glass, tinted & reflective glasses
- 3 **Architectural glasses** Tempered, laminated glasses and pergolas
- 4 Shower cubicles, shower screens and balcony balustrades
- 5 Aluminum windows and Doors
- 6 Glass tiles and mirrors tiles

We have a skilled, unique and dedicated team that is committed to providing the highest quality of service in the industry.

We are poised for continued growth and new challenges, and we will relentlessly pursue relationships that will help us achieve our vision and yours.

Contact - 0715850862

Mail - sales@abritglass.co.ke

Website - www.abritglass.co.ke

Showroom - 1st Floor Plessy House,  
Uhuru H-way, Nairobi



### ABSA BANK KENYA PLC

Absa Bank Kenya PLC is part of Absa Group Limited, an African financial services group that aims to be the pride of the continent. Absa Group Limited is listed on the JSE in South Africa and is one of Africa's largest diversified financial services groups with a presence in 12 countries across the continent.

We're committed to finding local solutions to uniquely local challenges and everything we do is focused on adding value. To this end, we offer our clients a range of retail, business, corporate and investment, and wealth management solutions. We also ensure a positive impact in all the countries where we operate.

**Absa Bank Kenya PLC Head Office, Absa Headquarters, Waiyaki Way, P.O. Box 30120, 00100 GPO, Nairobi, Kenya Telephone : 0722130120 / 0732130120 Email : absa.kenya@absa.africa Absa Bank Kenya PLC is regulated by the Central Bank of Kenya**



Africa Reit Ltd.



+254 721 325 902

300 Woodley Village by Africa Reit Limited is a premier residential development located in the heart of Woodley Estate, Nairobi. Designed to foster a sense of community, this modern project features over 2,000 residential apartments, offering a range of studios, one, two, and three-bedroom units tailored to meet diverse lifestyle needs. In addition to high-quality living spaces, 300 Woodley Village incorporates essential commercial facilities, creating a vibrant urban environment for residents.

With a focus on sustainability, security, and convenience, the development offers ample parking, landscaped gardens, and recreational areas that enhance daily living. Its strategic location provides easy access to key transport links, schools, healthcare, and shopping facilities, making it an ideal home for individuals and families alike.

Driven by the tagline 'building community bonds,' 300 Woodley Village is not just a place to live-it's a place to thrive.



## Alba Apartments

Alba Garden Located on Kasuku road Kilimani offering STUDIOS, 1BR, 2BR, 3BR and DUPLEX PENTHOUSES. Completion date is Feb 2024. Below are full details and Photos for your reference. Kindly use virtual tour link for the showhouse :

YOUTUBE: <https://youtu.be/WqiOt-ICvks>

SHOWHOUSE TOUR LINKS

<https://youtu.be/ONnsP2jPv0s>

The various amenities include:

- Fully equipped gym and Club House
- High-speed lifts
- CCTV & Visual Conversational system
- Vehicle Management System
- Intelligent Lock
- Children's Playground
- Infinity swimming pool

Our project consists of four (4) types of units and **Penthouses**

Type A – 3 Bedrooms

Type B – 2 Bedrooms

Type C – 1 Bedroom

Type D – Studio

Penthouse A– 4 Bedrooms

Penthouse B– 5 Bedrooms

**Alba Garden:** 0735 939 999 | 0799 000 222



## AMEEY HOMES LTD

Aamey Homes Limited is a professional real estate and property development company specializing in residential and commercial developments across Kenya. The company is committed to delivering modern, affordable, and high-quality real estate solutions tailored to meet the evolving needs of homeowners, investors, and developers. Through innovative planning, strategic market analysis, and exceptional customer service, Aamey Homes continues to position itself as a trusted name in the real estate

JUNE  
11-14  
2026

KICC

industry. One of its notable projects is Parkroad Residency, an upcoming ultra-modern apartment development featuring executive one-bedroom apartments strategically located near Guru Nanak Hospital, approximately 3KM from Nairobi CBD. The project is designed to offer accessibility, convenience, and contemporary urban living.

Ameey Homes is dedicated to professionalism, transparency, and customer satisfaction, ensuring long-term value in every development.

**For inquiries and investment opportunities, contact Ameey Homes via (+254) 798 770 777 / (+254) 798 777 577 or email [info@ameeyhomes.com](mailto:info@ameeyhomes.com). Their offices are located at Empress Office Suites, Westlands, Nairobi.**



## ANG CONCRETE PRODUCTS

### Premium Marble-Concrete Creations

Experience the perfect blend of artistry and strength with our marble-concrete products. We specialize in paving slabs, decorative stones, and cladding tiles that transform spaces with elegance. Our sculptures and bas-reliefs bring timeless character, while flower vases, garden fences and borders add charm to outdoor living. Fences and posts combine durability with refined design, offering both security and style. Every piece is engineered for superior strength,

ensuring long-lasting performance. With a stylish variety of finishes, our products suit both modern and classic tastes. They are fully weatherproof, resisting the elements with ease, and designed for easy installation, saving time and effort. Whether you're building, renovating, or enhancing landscapes, our creations deliver beauty and reliability.

**Visit us at Eastview Business Park, Eastern Bypass, Ruai, Nairobi, and experience craftsmanship that elevates every project.**



## ASHUT ENGINEERS LIMITED

Ashut Engineers Limited is a leading manufacturer of customized luxury home furniture made of solid mahogany, executive office furniture, school and hospital furniture, warehouse racking, supermarket shelving, staff lockers, agriculture equipment and lubes drums. Since 1980, we have offered excellent craftsmanship and hence grown into a celebrated brand with clients across Kenya and Africa at large.

We currently occupy a 250,000 sqm space, located Along Nyahera Road off Lunga Lunga Road, with a modern showroom displaying a wide range of products every day of the week including weekends and public holidays. Following our tagline 'designed for the way you work', Our focus is to transform every clients desire into reality. We use state of the art machinery and this enables us to customize all our products as per the client's requirement.

**Visit our showroom today or any other day to experience the wide range of products we have to offer.**



+254 721 325 902



### BONFIRE ADVENTURES

Bonfire Adventures is Kenya's Leading Tours and Travel Company Safari company 5 years in a row. We are endowed with experience and creativity to assist you in enjoying the unique and natural gems in the East African region.

Our specialty is the ability to design unique tours and safaris to fit every type of tourist, from the budget to the luxury providing a unique opportunity to combine bush and beach adventures with East Africa's spectacular scenery and not forgetting the rest of the world hidden treasures!

If you're looking for a vacation that provides a huge sense of personal recreation while still being fun, exciting, relaxing, and adventurous and rewarding, we suggest you check out our wide range of tours and travel packages.



### COMEX HOMES (DELL DEVELOPMENT COMPANY LTD)

Discover a new standard of luxury living with Comex Homes. With a prestigious portfolio that includes Nyayo View Suites, Nyayo View Suites 2 situated in

Nairobi West, and Balozzi Suites located in South B, we offer unparalleled elegance and sophistication in prime city locations.

Our projects are situated at the heart of the city, providing easy access to shopping centers, educational institutions, medical facilities, dining options, and more. Experience the convenience of urban living without compromising on luxury.

At Comex Homes, we believe in pampering our residents with lavish amenities. From rooftop lounges with panoramic views to high-tech fitness centers, our properties offer a lifestyle of comfort and indulgence.

Join us and elevate your living experience with Comex Homes. Experience the epitome of luxury living in Nairobi's most sought-after locations.

**+254 111 055 155 | [www.comexhomes.ke](http://www.comexhomes.ke)**



### COMPLY INDUSTRIES LIMITED

Comply Industries is Kenya's leading producer of sustainable processed wood products and furniture.

We take pride in creating locally manufactured wood products and furniture utilizing sustainable wood processing technologies to minimize the use of endangered hardwood trees

Our business is to manufacture all our wood wood-based products to meet the highest of standards whilst

JUNE  
11-14  
2026

KICC

ensuring the timbers we use are sourced responsibly, and replenished to maintain our green environment.

Our commitment to sustainable wood production is reflected in the ever-expanding forest plantations and on-going reforestation program across Nakuru County in partnership with the Government of Kenya.

**Enterprise Road**  
**Mob: +254 733 555 047/ 733 555 019**  
**Email: salesnairobi@complyindustries.co**



### DEFENDRE SOLUTIONS LIMITED

Defendre Solutions Limited is a leading provider of custom security barrier solutions for residential and commercial properties across Kenya and the wider East African region.

Our company specializes in the supply and installation of high-quality security products including retractable grills, collapsible and sliding grills, automated and manual roller shutters, automated and manual shutter grills designed to enhance safety without compromising style. With a strong commitment to quality, the company uses both locally fabricated and internationally sourced materials to ensure durable and reliable security systems.

Our professional technicians handle measurement, fabrication, and installation to guarantee precision and performance, backed by a 5 year warranty on workmanship and products.

Defendre Solutions serves homeowners, developers, contractors, and real estate investors seeking effective security solutions for doors, windows, garages, and other entry points.

**Location: Utawala trade center, Bhakita crescent**

**Rd. Near El Shaddai Junior school.**

#### Call to Action:

**To secure your home or business with reliable and stylish security barriers, call 254 797 954441 or 758620161**

**Emails us at - [Info@defendresolutionsltd.com](mailto:Info@defendresolutionsltd.com)  
[ekayaki@defendresolutionsltd.com](mailto:ekayaki@defendresolutionsltd.com)**



**DTG UNITED**  
TECHNOLOGIES ENGINEERING LIMITED

### DTG UNITED TECHNOLOGIES ENGINEERING LIMITED

DTG United Technologies Engineering Limited is a leading vertical transportation engineering company based in Nairobi, Kenya, specializing in the sales, installation, modernization, maintenance, and major renovation of elevators, escalators, and lifting systems.

Founded by industry professionals with extensive experience gained from Otis Elevator (Asia Pacific), the company is backed by a highly skilled technical team with years of hands-on expertise in elevator installation and maintenance.

Committed to the highest standards of safety, quality, and reliability, DTG delivers innovative solutions tailored to residential, commercial, industrial, and mixed-use developments. The company works closely with clients to ensure efficient project execution, regulatory compliance, and long-term equipment performance through responsive after-sales support and maintenance services.

With a strong focus on customer satisfaction and



**+254 721 325 902**

engineering excellence, DTG United Technologies Engineering Limited continues to support Kenya's growing infrastructure and real estate sectors with dependable vertical transportation solutions.

#### Contact Information

**Marakwet Garden B6, Elgeyo Road,  
Kilimani, Nairobi**  
Office: +254 116 555 556



### HENBON PROPERTIES - DIAMOND BAY

#### LOCATION & DEVELOPER

Prime Westlands location (Westlands Road, next to GTC) by a reputable developer with a history of successful projects (e.g., Diamond Homes, Nandwa Ivy Residence).

#### PROJECT DETAILS

- **Structure:** 2 blocks (25 floors each), 3 basements.
- **Units:** 1 & 2-bed en-suite apartments; 3-5-bed penthouses.
- **Completion:** August 2027 (20% already sold).

#### Pricing (Starting From)

- 1-bed (68 sqm): Ksh 8.8M
- 2-bed (115-146 sqm): Ksh 14.3M-17.5M

#### Payment Plans

- **Cash:** 20% (7 days), 30% (30 days), balance (60 days).
- **Installment:** 24-month plan with staggered payments (20% deposit, 10% increments,

30% on completion).

- Discounts for early deposits/flexible plans.

#### Amenities

Heated pool, smart home tech (face scan entry), gym/yoga space, kids' area, café, mini-mart, CCTV, borehole water, high-speed lifts, ample parking.

+254 768 008 888 | +254 726 998 888

**Call to Action: Secure units now with flexible payment options!**



### EMKAY BUILDERS / PRESTON VALLEY / REGENTS PARK - SYOKIMAU

- \* 4Bedroom Maisonettes with en-suite DSQ & 2 Parking spaces in Ruiru Town
- \* Gated community of 35 units, common areas, cctv and Back-up generator
- \* Children play area, Common gardens, Equipped gym and private borehole.

Tel. 0728 545 545 | prestonvalley2023@gmail.com

**EverExceed  
Kenya**

#### EVEREXCEED KENYA

Founded in 1985, EverexceedKenya serves the renewable energy, telecommunication, and industrial sectors with reliable, innovative power equipment across over 50 countries.

JUNE  
11-14  
2026

KICC

**Core Products:** Industrial batteries (Lithium/Lead acid), solar modules/inverters, UPS, and DC chargers.

**Industries we serve:** Telecommunications, renewable energy and BESS, commercial & Industrial entities, data centers, oil&gas and power substations.

**Key Features:** Strong in-house Research & Development, global reach with 1500+ partners, and 3000+ customers, Kenyan regional office, Aftersales support, guaranteed warranty.

**Tel. 0793 849 486**

**Email: [sales@everexceedkenya.com](mailto:sales@everexceedkenya.com)**

**[www.everexceedkenya.com](http://www.everexceedkenya.com)**

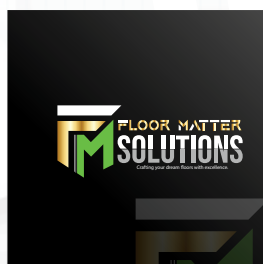


**FDC CONSTRUCTION  
COMPANY LIMITED**

### FDC CONSTRUCTION COMPANY LTD

FDC construction company Ltd is a leading provider of high-quality WOODEN DOORS, KITCHEN CABINETS, WARDROBES, AND STEEL DOORS fixing services. With a strong commitment to excellence and customer satisfaction, we have established ourselves as a trusted partner for residential and commercial clients throughout the country.

**Any inquiries or service kindly please reach us via  
+254 726667838 116713333**



**FLOOR MATTER SOLUTIONS LTD**

Floor Matter Solutions Ltd is a trusted provider of premium flooring and outdoor surface solutions, delivering exceptional quality, durability, and style for residential, commercial, and institutional projects. We are a trusted distributor of Premium SPC Flooring, LVT Tiles, PVC Tiles, Astro Turf and offering innovative products that combine aesthetics with long-lasting performance.

In addition, we provide professional sports court design, construction, and surfacing services, creating high-quality recreational and sporting facilities tailored to our clients' needs. Our solutions are carefully selected to meet the highest standards of safety, functionality, and visual appeal.

At Floor Matter Solutions Ltd, quality is at the heart of everything we do. We are committed to excellence in product selection, workmanship, and customer service, ensuring every project is completed to the highest standards. Our dedicated team works closely with clients from concept to completion, delivering reliable solutions that exceed expectations.

Customer satisfaction remains our top priority, making us a preferred partner for flooring and sports surface projects across Kenya.

**Contact us through;**

**Website: [www.floor mattersolutions.com](http://www.floor mattersolutions.com)**

**Email: [info@floor mattersolutions.com](mailto:info@floor mattersolutions.com)**

**Phone: 254725286119/254792171145**

**Or visit our showroom at Membley Bypass Plaza  
along Ruiru Eastern Bypass.**



**GEMINIA INSURANCE CO. LTD.**



**+254 721 325 902**

### Protecting What Matters: Geminia Insurance

Established in 1981, Geminia Insurance Company Limited is a proudly local, premier insurance provider dedicated to helping you protect what you earn, build, own, and cherish. With over four decades of experience, we have built a reputation for delivering innovative general insurance solutions with a personal touch and professional excellence.

At Geminia, we understand that your home is more than just a property; it is your sanctuary. Our commitment to quality and efficient service ensures that we stand by our clients when it matters most, offering peace of mind through every stage of life.

Whether you are looking to secure your home, family, or business, our team is driven by a passion for service and a mission to provide value-based, innovative solutions. Visit us today to discover how our tailored insurance packages can provide the robust protection you and your assets deserve.

**Geminia Insurance: Your Partner in Protection.**



**GLITTERLONG**  
DEVELOPMENT COMPANY LIMITED



**GLITTERLONG DEVELOPMENT CO. LTD.**  
**(UBORA LIVING)**

Welcome to Ubora Living - Where Nairobi's Energy Meets Nature's Peace

Ubora Living redefines urban elegance in the heart of Nairobi. Our premium apartment project offers residents the rare privilege of two breathtaking worlds: on one side, the vibrant Westlands skyline pulses with the city's finest dining, business, and entertainment; on the other, the tranquil expanse of Karura Forest provides a lush, green retreat for morning jogs and evening strolls.

Designed for both investors and families, each residence balances contemporary architecture with

functional comfort. Large windows and private balconies invite natural light and cool forest breezes, while our secure, community-focused grounds include landscaped gardens, ample parking, and 24/7 security.

At Ubora Living, you don't have to choose between city convenience and nature's serenity—you get both. Visit us at the Kenya Homes Expo Booth No. 7 and contact us as below.

**Phone: 0745577970 Email: glitterlong999@gmail.com**

**WhatsApp: +254 745577970**

**Marwa Heights, General Mathenge Rd, Westlands**



**GRADE ONE STEEL FABRICATORS LTD**

Grade One Steel Fabricators Ltd is a leading provider of custom door fabrication services. We specialize in modern pivot doors, B-20 fire-rated doors, and solid mahogany composite doors. Each door can be fully customized to any size, ensuring that we meet the unique needs of every client.

What sets us apart is our use of CAD technology to design our doors, allowing clients to view their door in 3D before making the final decision. This guarantees precision and satisfaction.

Our workstations are located in:

**Nairobi:** Light Industries, Cardinal Otunga Road, Kariobangi North

**Kisumu:** KIRDI, Kibos Road, opposite BOC Gases

**For inquiries, contact us at +254708929681 or email us at sales@gradeone.co.ke.**

**Visit our website: [www.gradeone.co.ke](http://www.gradeone.co.ke).**

JUNE  
11-14  
2026

KICC



### GRADE ONE REALTORS LIMITED

#### **GRADE ONE REALTORS LIMITED – YOUR TRUSTED REAL ESTATE PARTNER SINCE 2000!**

Looking for the perfect place to build your future?  
At Grade One Realtors Ltd, we make your dream a reality!

- Prime Plots & Homes – Secure, well-located, ready-to-build
- Professional Service – Integrity, transparency, and personalized support
- Over 20 Years of Excellence – Thousands of happy homeowners
- Affordable & Flexible Payment Plans

Whether you're buying, selling, or investing, we are your go-to real estate experts in Nairobi and beyond.

Your satisfaction is our mission – because property is not just land, it's your future!

**Call/WhatsApp:**

**0787 443 333 | 0701 443 333**

**Visit us today – let's find your perfect property together!**

**Grade One Realtors Ltd – Turning Dreams into Addresses**

---

---

---

---

---



HAMILTON HAMPTONS



Guaranty Trust Bank (Kenya) Ltd

### GTBANK KENYA

GTBank Kenya is a leading financial institution committed to providing innovative banking solutions and exceptional customer service that is hinged on professionalism, ethics and integrity. GTBank Kenya is a subsidiary of Guaranty Trust Holding Company Plc (GTCO Plc) which is a professional and reputable financial holding company.

GTCO Plc is listed on the Nigerian Exchange (NGX) Limited and the London Stock Exchange and has banking operations in Nigeria, Ghana, Gambia, Liberia, Cote D'Ivoire, Sierra Leone, Uganda, Tanzania, Rwanda and the United Kingdom.

In 2013, GTBank Kenya acquired a 70% controlling stake of then Fina Bank Group which had been in operation in Kenya for over 25 years with subsidiaries in Rwanda and Uganda. In 2025, GTCO completed the acquisition by obtaining 100% ownership of the Fina Bank Group.

GTBank Kenya is a friendly brand that truly cares and this permeates through every sphere of our business. We maintain a culture of excellence and go to great lengths to actualize the popular phrase; The Customer Is King.



**+254 721 325 902**

Vision: To be Africa's leading financial services institution.

Mission: To make end-to-end financial services easily accessible to every African, and businesses by leveraging technology and strategic partnerships.

#### GTBoma Home Financing Solution

GTBoma is GTBank Kenya's tailored home ownership financing product designed to make the journey to owning your dream home simpler, more flexible, and more accessible. Whether you are a first-time buyer or upgrading your living space, GTBoma offers competitive mortgage solutions with structured repayment plans, attractive interest rates, and personalized support to guide you every step of the way.

Through GTBoma, customers can seamlessly finance properties within approved developments, helping them turn home ownership aspirations into reality with ease and confidence.

**Maximum Amount: KES 40,000,000**

**Tenure: 15 Years**



At iClear Wellife Service Limited, founded in 2022, we focus on delivering cutting-edge water purification solutions that prioritize health and safety.

Our advanced products utilize reverse osmosis (RO) technology to ensure clean and safe drinking water for households and offices. We offer a range of devices, including the Standard Purifier, Premier Purifier, Desktop Machine, and Office-Use Machine, all designed to eliminate 99.99% of harmful bacteria and contaminants.

The machines cater to various needs, from household use to office environments, with options for hot and cold water dispensing. Our mission is to enable millions of families worldwide to access safe drinking water through practical, cost-effective, and sustainable solutions, promoting health and environmental well-being.



#### I HOME KENYA LIMITED

Welcome to **I HOME FURNITURE**

We deal with imported furniture both exterior and interior furniture especially for home, office and outdoor.

Our furniture have superior craftsmanship and elegant designs which are luxurious, modern and classic.

We use high end quality material ensuring both comfort and quality hence flexible for usage.

**Please welcome**



#### HOMESKENYA MANAGEMENT LTD

Homes Kenya Management seeks to offer a hands-on management approach to property investors by protecting their investments and enhancing the value of their property. We strive for property management, leasing, and sales with a professional touch.

Homes Kenya Management has been in operation

JUNE  
11-14  
2026

KICC

for more than 25 years and has leased more than 5000 rental units and continues to manage different commercial developments. We have innovative state-of-the-art IT and soft wares for tracking, record keeping, bookkeeping, and reports.

**New Rehema House, Rhapta road, Westlands**  
**Tel : 0721325902**

**HOMEfix**  
You mention it. We fix it.

### HOMEFIX

HomeFix is a construction and maintenance company registered in Kenya. The company has been in existence for over a decade with over ten years experience in real estate construction, maintenance and refurbishment.

With direct links with the various suppliers and specialists who put every possible professional impact to meet the demand for the latest lifestyle demands, HomeFix deals with the construction and repair of all types of buildings and developments.

**New Rehema House, Rhapta road, Westlands**  
**Tel : 0721325902 | Email : info@homefix.co.ke**



### JANI COSMETICS

Jani offers a thoughtfully curated range of wellness and skincare products designed to elevate everyday self-care.

Our collection includes luxurious body lotions, nourishing body washes, essential oils, and beautifully packaged gift hampers—each crafted with high-quality ingredients to promote relaxation and well-being. We also offer signature Serenity vouchers, perfect for gifting meaningful experiences, alongside travel-friendly essentials and lifestyle products that fit seamlessly into modern living.

Rooted in a commitment to quality and authenticity, Jani blends functionality with indulgence, making our products ideal for both personal use and corporate gifting. Whether you are a new homeowner looking to create a calming space or searching for the perfect gift, Jani provides elegant, practical solutions that leave a lasting impression. Discover a brand that brings comfort, care, and a touch of luxury into every home.



**LESONIA**  
RESIDENCY LIMITED

**KAHO ASSETS HOLDINGS / LESONIA**  
**RESIDENCES**



**+254 721 325 902**

#Transform  
YourLiving

[www.kenyahomesexpo.com](http://www.kenyahomesexpo.com)

39<sup>th</sup> KENYA  
HOMES  
EXPO



## KARUNGURU GATED COMMUNITY

Karunguru Gated Community is a thoughtfully planned residential development designed to offer a seamless connection between modern living and nature. Located along Kenyatta Road in Kiambu County and surrounded by lush greenery and open landscapes, it provides a refreshing escape from the city while remaining conveniently accessible.

Every aspect of the community is crafted to embrace natural elements, creating a serene, breathable environment for residents to relax, recharge, and truly feel at home. Controlled access, well-laid infrastructure, and expansive green spaces allow residents at Karunguru to enjoy a secure and tranquil lifestyle.

Combining elegance, sustainability, and a strong sense of place, Karunguru stands out as a unique opportunity for both homeowners and investors. Its flexible buy-and-build approach allows homeowners to create personalized homes within a cohesive, nature-inspired setting.

Visit our website: [www.karungurugatedcommunity.com](http://www.karungurugatedcommunity.com) or call us on 0745171717 for more info.



KCB

MORTGAGE

KCB MORTGAGE



## KINGDOM BANK

Kingdom Bank is a Subsidiary of the Co-operative Bank of Kenya, offering superior client service convenience and professionalism in our customer interactions. With a network of 19 branches across the country and continuously expanding, we offer robust digital banking platforms including \*344#, the KB Mobile App, Digilife (internet banking) various payment solutions such as the KB Visa card, Kingdom Bank Till and M-collections Solutions.

Our customers also benefit from access to their accounts at Co-operative Bank ATMs and Co-op Kwa Jirani Agents nationwide.

Kingdom Bank extends a warm invitation to teachers, civil servants, disciplined forces personnel, retail traders, transporters (including motorcycle riders and taxi operators), manufacturers, restaurant owners, and others to consider us as their preferred financial partner.

For any queries, contact us on 0709881300

Website: [www.kingdombankltd.co.ke](http://www.kingdombankltd.co.ke)



MADISON GROUP

Life without worry

## MADISON GROUP

Madison Group Limited is a locally owned financial services holding company that specializes in Insurance and wealth management services. The Group comprises of Madison Life Assurance Kenya Limited, Madison General Insurance Kenya Limited, and Madison Investment Managers Limited.

JUNE  
11-14  
2026

KICC

### Mission

To lead in innovative insurance services that creates and protects wealth for all our stakeholders and to practice good corporate governance.

### Values

- Teamwork
- Integrity
- Service
- Initiative
- Innovativeness
- Professionalism

**Madison House Upper Hill Close,  
P.O. Box 41163 – 00100, Nairobi  
Tel. 0709 922 000  
madison@madison.co.ke**



**MENTOR GROUP**  
WE MAKE IT HAPPEN

### MENTOR GROUP LIMITED

Established and incorporated in 1999, Mentor Group Limited is a real estate consortium offering diverse interests in real estate development. We believe that in today's global marketplace, complexity and speed are certainties. In such an environment, our axiom is: do it, do it right, do it right now. Creating clear direction, efficiency, timely response, and quality outcomes are our major goals.

### CONSULTING SERVICES

The management of Mentor Group is systematic in its project approach and appraisals. Our project management team is engaged in articulating aspects

that relate to the following main processes of project **DEVELOPMENT**

Inception (initiation) | Feasibility (Planning)

Designing (Executing) | Controlling (Tendering and post contract period) Commission (closing), as well as the following knowledge areas.

**6th Floor, New Rehema House, Rhapta Rd - Westlands.**

**P.O. Box 66331 - 00800 Nairobi-Kenya**

**Tel: 020 4448246, 4447444, 4445393, 4449228**

**info@mentorgroup.co.ke www.mentorgroup.co.ke**



### MINISTRY OF LANDS HOUSING AND URBAN DEVELOPMENT

Ministry of Lands, Housing and Urban Development has been in existence, though as different departments of various ministries that implemented housing policies at different times. This can be traced from the 1960's, 1970s and the 1980s.

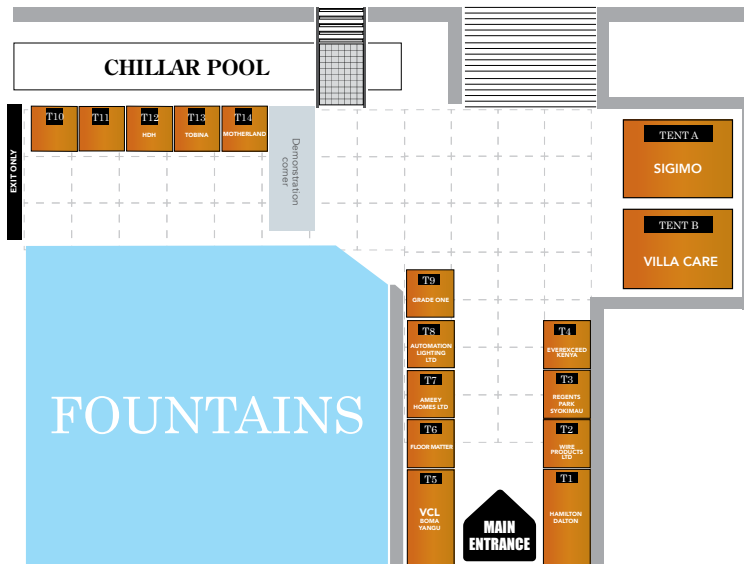
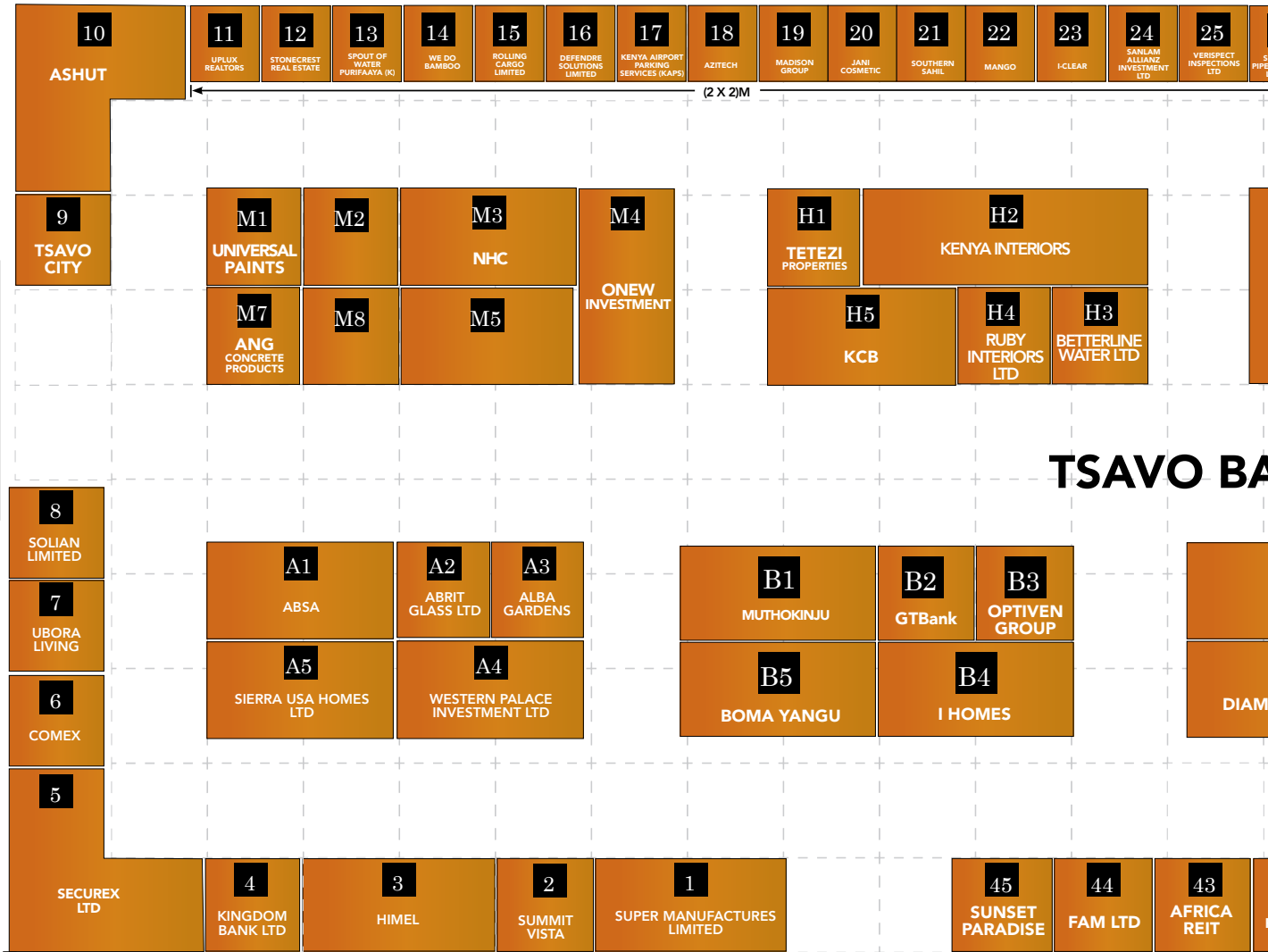
In the 1980's there existed the Ministry of Housing and Social services, which later became the Ministry of Housing. Between 1990s and 2004, Housing was together with Roads and Public Works as the Ministry of Roads, Public Works and Housing. In 2004, Housing was moved to the Ministry of Lands and Settlement and the new ministry was named Ministry of Lands and Housing.

Despite the inconsistency in placement of the key docket of Housing, the core functions of the departments that currently constitute the Ministry of Housing have remained the same. In December 2005, following Government reorganization, the Ministry of Housing was re-established.

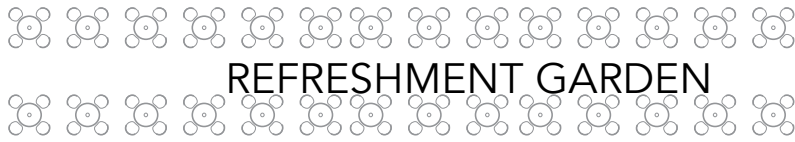
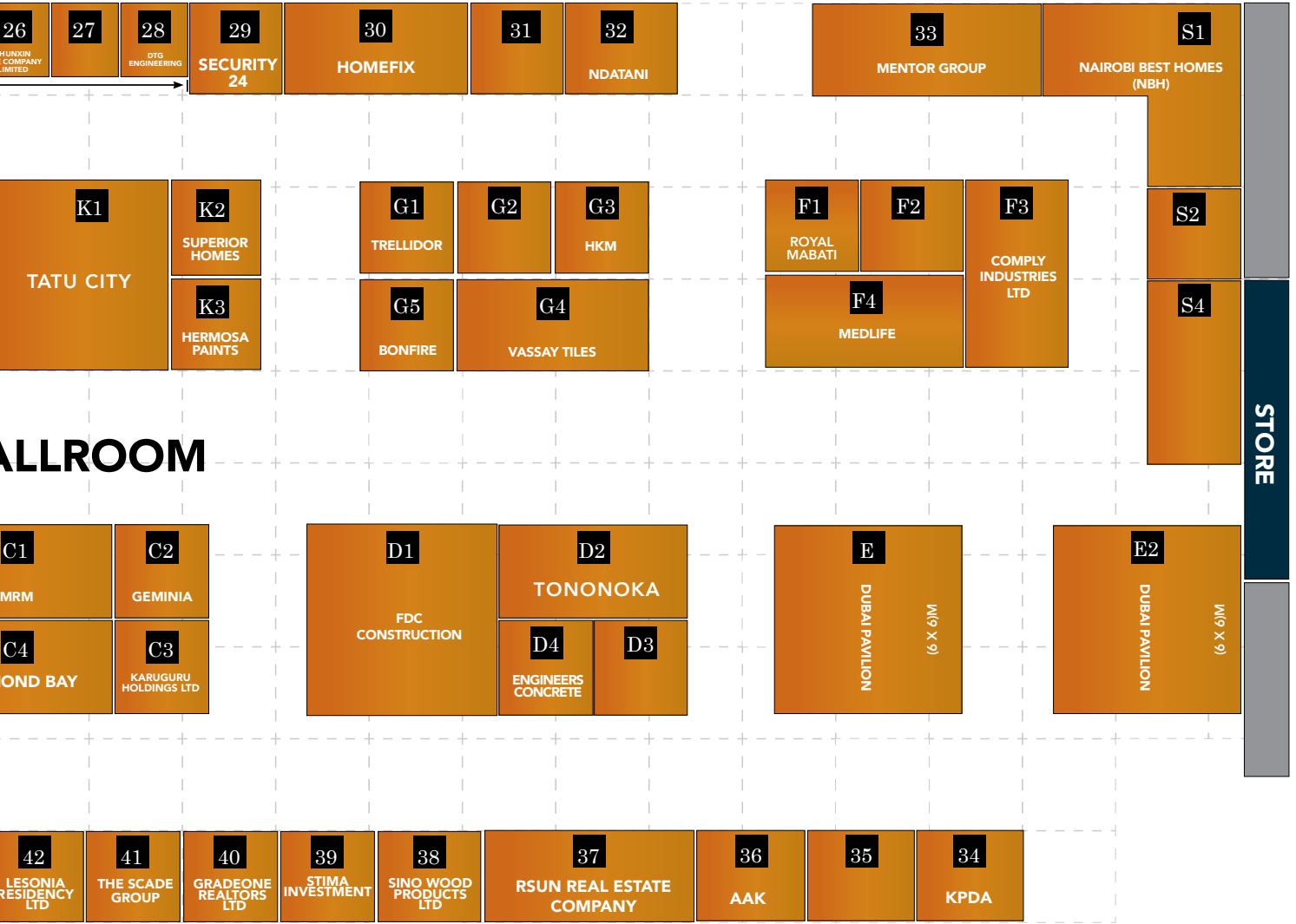


**+254 721 325 902**

**ORGANIZERS' OFFICE 'A'**



HYDRAULIC DOOR



# 39<sup>th</sup> KENYA HOMES EXPO

[www.kenyahomesexpo.com](http://www.kenyahomesexpo.com)



## MOTHERLAND CONCRETE & LOGISTICS

### PRODUCTS

Pre-stressed Concrete rib beams & Hollow Blocks

### OVERVIEW

Motherland is a leading manufacturer and installer of pre-stressed beams and hollow blocks, serving the construction industry with high-quality, innovative solutions. With a commitment to excellence, we provide products that enhance structural integrity, reduce construction time, and promote sustainable building practices.

### KEY PRODUCTS AND SERVICES

**Pre-Stressed Beams:** Our pre-stressed beams are engineered to withstand heavy loads and provide structural stability in a variety of construction projects. They are available in T-Beams and Flat Beams, tailored to meet the specific needs of each project.

**Hollow Blocks:** Our hollow blocks are lightweight yet durable, making them ideal for both load-bearing and non-load-bearing applications. They offer excellent thermal insulation properties and contribute to energy-efficient construction.

**Installation Services:** We offer comprehensive installation services to ensure the seamless integration of our products into your construction projects. Our experienced team uses state-of-the-art equipment and techniques to guarantee precision and efficiency.

### Customer Base

Our primary customer base includes construction companies, architects, engineers, and developers involved in residential, commercial and industrial projects.

### Competitive Advantage

Motherland stands out in the market due to our commitment to quality, innovation, and sustainability. Our customer-centric approach, experienced team, and competitive pricing make us the preferred choice for construction projects of all scales.

**Marurui, Off Northern Bypass Nairobi**

**Phone: 0728 520 090**

**Email: [coo@motherlandconcreteandlogistics.co.ke](mailto:coo@motherlandconcreteandlogistics.co.ke)**

**Website: [www.motherlandconcreteandlogistics.co.ke](http://www.motherlandconcreteandlogistics.co.ke)**



### MABATI ROLLING MILLS

In the dynamic landscape of Kenya's construction industry, one company stands out for its remarkable achievements and unwavering

commitment to excellence in innovative steel building & roofing solutions - Mabati Rolling Mills Limited (MRM).

Mabati Rolling Mills (MRM) has been providing steel roofing & building solutions to Kenya and the East Africa market since 1961. This has been successfully achieved by huge investments in an excellent manufacturing facility with world-class processes supported by a wide distribution network and customer centric services through its partners and retail outlets. The steel building solutions are rolled to deliver value and the highest quality to customers with focus on solutions for diverse application areas including residential, commercial, industrial and institutional buildings as well as raw materials for other sectors like storage, packaging & steel fabrications.

The MRM brand stands for trust, integrity and performance in all its processes and is the only steel manufacturer offering written product warranty

issued for all its brands. MRM continues to assure customers of the excellent product performance, quality and durability of its steel roofing, building solutions and other allied by products.

JUNE  
11-14  
2026

KICC



Muthokinju Paints & Cement Building with you since 1995

## MUTHOKINJU PAINTS & CEMENT

Muthokinju Paints & Cement has been building Kenya's future since 1995. What started as a single shop has grown into a nationwide network of 50 branches across 17 counties, making it easier and more affordable for Kenyans to access quality paints, cement, steel, roofing, and building materials.

We serve fundis, families, contractors, and developers with reliable products and a professional team of 500+ staff committed to excellent service.

Beyond products, we're about partnerships and progress supporting homes, schools, churches, shops, and major projects that shape communities and drive Kenya's growth.

Whether you're renovating, building from the ground up, or undertaking large-scale development, Muthokinju is your trusted building partner.

**Visit any of our branches nationwide**

**Call: 0799 022 022**

**Website: [www.muthokinju.co.ke](http://www.muthokinju.co.ke)**

**Email: [info@muthokinju.co.ke](mailto:info@muthokinju.co.ke)**

**Building with you since 1995**



**NAIROBI BEST HOMES**

As a subsidiary of Homes Universal Ltd, Nairobi Best Homes was established as an up market residential

properties agency in Kenya. Majoring in marketing and management of the most exclusive properties in the region. The company has continued to deliver exquisite properties and continues to grow its popularity in superb top notch developments.

**Tel: 020 4447444 Cell: 0722 - 512803**

**E-mail: [info@nairobibesthomes.com](mailto:info@nairobibesthomes.com)**

**Website: [www.nairobibesthomes.com](http://www.nairobibesthomes.com)**



## NDATANI ENTERPRISES LTD

We are a real estate company incorporated in 1995 aiming to meet the shelter needs from the first steps of buying a plot for housing, investments or speculation. We then help with construction in phases or liquidation of the investment in several plots into a ready house. We have been involved in developments in Athi River, Kitengela and Embakasi in Nairobi and Bamburi in Mombasa.

We have both commercial and residential tiled plots that are variously serviced, controlled development, with plots prices ranging from Kshs. 475,000/- and 1 acre blocks starting at Kshs. 1,975,000/- for groups – societies, chamas, upgrading individuals depending on location and services.

We offer cash discounts, planned installments or financing solutions through major banks of Housing Finance, Equity, KCB, Co-operative bank e.t.c for plots and construction.



**+254 721 325 902**

#Transform  
YourLiving

[www.kenyahomesexpo.com](http://www.kenyahomesexpo.com)

39<sup>th</sup> KENYA  
HOMES  
EXPO



### OPTIVEN GROUP

Optiven is Kenya's leading real estate company with over 20 year's experience. As champions of social and economic transformation, Optiven provides ready to build properties for investors across the board. With affordable properties on offer, the Optiven portfolio of properties provides a wide variety for investors to choose from.

Over the years, Optiven has enabled investors to purchase properties at their own pace by providing easy payment plans.

**0790300300**

**Absa Towers, 2nd and 14th Floor, Nairobi Kenya**  
[www.optiven.co.ke](http://www.optiven.co.ke)



### PURIFAAYA KENYA

Purifaaya Kenya is committed to transforming everyday access to clean and safe drinking water through simple, effective, and sustainable filtration solutions.

By offering high-performance ceramic water filters, we enables families, schools, and all organizations to enjoy safe water without reliance on electricity or Boiling. Purifaaya combines innovation with impact, focusing on health improvement, cost savings, and environmental responsibility.

Our growing presence across East Africa is driven by strong partnerships and community-based initiatives. As an exhibitor at the Kenya Home Expo on (16th-19th April), We look forward to engaging visitors,

Partners and demonstrating how safe and clean water can be accessible to all.

#### Contacts.

**Mobile : 0708786057**

**Email: [stephenwahito@spouts.org](mailto:stephenwahito@spouts.org)**

**[kenya@spouts.org](mailto:kenya@spouts.org)**



### ROBBEX PAINTS COMPANY

Transform your spaces with Robbex Decorative Paints - where colour meets elegance!

This is Robbex Decorative Paints Limited, we specialize in high-quality decorative paints imported from Egypt. For building, renovating, redecorating, or adding the perfect finishing touch to your home, we have the colors and finishes to bring your vision to life.

**Visit us today: Kijabe Street, Building No. 45,**

**Tel: 0768 301152**



### ROLLING CARGO

Your Shipping Partner

ROLLING CARGO

Rolling Cargo is an established international air and sea freight forwarder with over 18 years of trusted industry experience. Backed by a team of over 200

JUNE  
11-14  
2026

KICC

professionally trained staff and strong partnerships with global carriers, customs authorities, and logistics stakeholders,

Rolling Cargo serves as a reliable extension of our clients' businesses. We provide comprehensive import and export logistics solutions, specializing in air and sea freight services to and from Kenya.

Our operations are built around reliability, transparency, and consistent communication, ensuring that clients remain informed and confident throughout the entire shipping process. With extensive international connections and access to multiple global flight and shipping routes,

Rolling Cargo is uniquely positioned to move cargo quickly, efficiently, and securely across international markets. Whether supporting B2B supply chains or B2C shipments, every consignment is handled with the highest level of care and operational expertise. Our services simplify complex logistics by managing freight coordination, customs clearance, compliance requirements, and documentation, allowing businesses to focus on growth while we handle the supply chain.

Rolling Cargo currently facilitates shipping from key global hubs including China, Dubai, Turkey, the Netherlands, Italy, the United Kingdom, and South Africa, connecting businesses in Kenya to the world through reliable and competitively priced freight solutions.

With an International Courier License, we also handle smaller shipments such as parcels, cartons, and packages. For urgent consignments, air freight offers a fast and efficient option, while sea freight provides cost-effective solutions for larger volumes.

At Rolling Cargo, our mission is simple: to move your business forward with dependable logistics and exceptional service. For inquiries,

**Please contact our Customer Care Team at  
+254 709 286 286**



## ROYAL MABATI FACTORY LIMITED

Since our establishment, we've set the standard in the industry by consistently delivering durable, stylish, and affordable roofing products built to last.

Our extensive range includes modern mabati profiles, vibrant color options, and precision; engineered accessories, crafted using cutting-edge technology and top-grade materials. Every product from our factory is designed to offer long-term protection, enhance property value, and meet the unique demands of both residential and commercial construction.

Driven by excellence and continuous innovation, Royal Mabati Factory Limited continues to redefine roofing solutions while maintaining a strong commitment to quality, reliability, and customer satisfaction.

### Our Promise

- Durable & Stylish Roofing Solutions
- Wide Range of Profiles & Colors
- Quality Guaranteed Products
- Affordable Pricing
- Nationwide Reach & Support
- Pay & Carry Same Day
- Fast & Free Delivery

Call/SMS/Whatsapp us on 0722638383.

### Follow Us Online

**1.Facebook - Royal Mabati Factory LTD**

**Link: [https://business.facebook.com/latest/?asset\\_id=820368221417987&nav\\_ref=manage\\_page\\_ap](https://business.facebook.com/latest/?asset_id=820368221417987&nav_ref=manage_page_ap)**



**+254 721 325 902**

plus\_left\_nav\_mbs\_button

2. Instagram - @royalmabati

Link: <https://www.instagram.com/>

3. TikTok - Royal Mabati Factory LTD

Link: [www.tiktok.com/@royalmabati](http://www.tiktok.com/@royalmabati)

4. Twitter - Royal Mabati Factory Limited

Link: <https://t.co/yb02hpRZwu>

5. Website - <https://www.royalmabati.com/>

Email: [sales@royalmabati.com](mailto:sales@royalmabati.com)

Location: Sabaki, Mlolongo, Mombasa Road,  
Nairobi, 00202



## R-SUN REAL ESTATE – THE IVY GROUP

The Ivy Group is a reliable real estate company with more than 10 years of experience in developing modern residential projects. The company has earned a strong reputation for quality, professionalism, innovation, and customer satisfaction. Its completed developments include Diamond Homes, Nandwa Ivy, and Diamond Ivy. Ongoing projects include Blossom Ivy Residence, Luckinn Ivy Residence, and Ivy Park Residences, all situated in prime areas of Nairobi.

These projects provide modern and comfortable living spaces for both homeowners and investors. The Ivy Group is dedicated to delivering long-term value and building thriving communities through excellence in real estate.



## RUBY INTERIORS

Ruby Interiors is a leading Kenyan interior solutions company that helps homes and businesses transform their spaces with stylish, practical finishes. The company specializes in window, floor and wall treatment solutions with products such as wallpaper, wall murals, vinyl carpets, grass carpets, window blinds, fluted panels, and privacy fences. Ruby Interiors focuses on both aesthetics and functionality, offering designs that enhance comfort while remaining durable and easy to maintain.

Through site visits, showroom consultations, and professional installation, the brand serves a wide range of clients from homeowners to offices and built industry professionals. With a focus on quality, affordability, and modern trends, Ruby Interiors aims to make every space beautiful and very functional.

**Contact them today by visiting [www.rubyinteriors.co.ke](http://www.rubyinteriors.co.ke) or call 0746 741 568.**

Showroom.: Paramount Plaza Ground floor next to Globe roundabout



## Investments

## SANLAM ALLIANZ INVESTMENTS LTD

Sanlam Allianz Investments Limited is a leading fund manager in the region with an unmatched track record in service delivery and performance since 1998. We provide comprehensive fund management services to a broad range of institutional and individual investors - including pension schemes, private companies,

JUNE  
11-14  
2026

KICC

insurance companies, intergovernmental organizations, and unit trust funds. Our investment expertise spans all major asset classes, underpinned by rigorous research, disciplined risk management, and a commitment to delivering sustainable value in an ever-changing market landscape.

We manage over USD 5 billion in Assets Under Management (AUM).

Sanlam Allianz Investments Limited is licensed and regulated by the Capital Markets Authority (CMA) and the Retirement Benefits Authority (RBA) in Kenya; by the Capital Markets Authority (CMA) and the Uganda Retirement Benefits Regulatory Authority (URBRA) in Uganda; and by the Capital Markets and Securities Authority (CMSA) in Tanzania.



## THE SCADE GROUP

The SCADE Group is a distinguished real estate conglomerate comprising a portfolio of specialized entities dedicated to the full lifecycle of property development. SCAD E is an acronym for Stanhus Capital Developers, reflecting our integrated dual-model approach: the strategic deployment of investment capital paired with data-driven, high-performance property creation.

At The SCAD E Group Limited, we bridge the gap between financial foresight and architectural excellence. We specialize in the conceptualization, design, and execution of premium residential and mixed-use assets across Kenya. By prioritizing uncompromising construction standards and

sustainable innovation, we ensure that every project delivers both immediate luxury and enduring capital appreciation.

### STRATEGIC PORTFOLIO HIGHLIGHTS

Lazuli Court Apartment | Ngong, Zambia Rd

A premier residential landmark featuring 40 bespoke 4-bedroom all-ensuite residences, each spanning an expansive 198SQM. Nestled in the tranquil, leafy suburbs of Ngong near the Ooloolua Nature Trail, the development offers a rare duality of serenity and spectacle-capturing breathtaking views of the Ngong Hills and the vibrant Nairobi skyline. Book Showhouse tour today and secure Early-Bird Pricing.

**Timeline:** Scheduled completion in early 2027.

Tuli One & Tuli Two | Utawala

High-Growth Investment Assets strategically positioned within one of Kenya's fastest growing corridors, the Tuli series represents the Group's expansion into high-yield investment portfolios.

These developments are meticulously designed to meet the demands of the middle

to-upper-tier residential market, offering sophisticated urban living coupled with

strong rental demand and value growth potential.

**Call/ Whatsapp: 0116 095 095 |**  
**[www.thescadegroup.com](http://www.thescadegroup.com)**



## SECUREX

Securex Agencies (K) Ltd is East Africa's leading security and technology solutions provider, delivering trusted protection and innovation for over 55 years. We transform how people, businesses, and communities



+254 721 325 902

experience safety through intelligent, integrated solutions designed for a smarter, safer world that offers peace of mind. At Securex, we enable your vision through precision by delivering technology solutions you can trust. Our comprehensive portfolio includes;

- Intrusion Detection
- Emergency Response Services
- Access Control
- Video Surveillance solutions
- Fleet management
- Perimeter Solutions
- Screening Solutions
- Parking Management Systems
- Visitor Management Systems
- Queue Management Solutions
- Manpower
- Boardroom Audio Visual Solutions
- Security Operations Center (SOC) Solutions
- Risk Management Services.

From residential developments and gated communities to commercial, industrial, and public-sector environments, we combine advanced technology, expert personnel, and data-driven intelligence to protect what matters most. With a commitment to innovation, operational excellence, and customer success, Securex remains the trusted partner for organizations and homeowners seeking reliable, future-ready security and technology solutions across East Africa

**Securex Agencies (K) Ltd**  
9Riverside, Riverside Drive  
Tel. +254 711 069 999  
Info@securex.co.ke

**SECURITY 24**

ROUND THE CLOCK SECURITY

**SECURITY24**

Security24 Ltd offers professional specialized services delivered by a team of robustly experienced security

specialists. With a wealth of professionals adept in CCTV surveillance, electric fencing, investigation, security surveys and audits. We always aim to establish long lasting relationships and strategic partnerships with our clients.

Our firm incorporates clients' specific needs into providing elite security and custom security services. Whether it is event security guarding, parking management, access control or specialized security services Security24 will deliver the highest level of security and safety for our the clients and all that is important to them.

#### MISSION

To provide high quality, timely and satisfactory security services to all security challenges that are experienced by our customers through manned guarding , specialized security services and state of the art technology .

#### VISION

To be the market leader in provision of specialized security solutions backed with modern technology. Security24 Ltd, we understand that each client is unique, requiring customized security solutions for their specific needs.



顺鑫管业  
SHUNXINGUANYE

**SHUNXIN PIPE COMPANY LTD**

Shunxin Pipe Company Ltd is the manufacturer of special pipes used for fabricating windows, doors & office spaces partitioning. We're located in Athi River, Kware road behind Nova Pioneer School. Our products form a complete set of Tube pipe + Flat bar joined together hence when using our products, there's no need to buy Tube pipe & Flat bar separately.

JUNE  
11-14  
2026

KICC

4205 : Big T # is "3by2" tube pipe.  
4201 : Big L # is "2by2" tube pipe.  
4202 : Zed # is "1½by1½" tube pipe.  
2505 : Small T # is "2by1" tube pipe.  
2501 : Small L # is "1½by1" tube pipe.  
Gauges varying from 1.0mm - 1.4mm or  
gauge 18 - 14.



SIERRA HOMES

AAIG Capital is a residential and commercial real estate investment company primarily focusing on multi-family real estate investments

0733555501 Rajab Hatibu  
+14075925011 Sylvester Harding.  
Mombasa Nyali Center  
Sylharding@gmail.com  
Hatiburj@gmail.com



SIGIMO ENTERPRISES

Sigimo Enterprises, a subsidiary of Homes Universal, was established in 2002 as a private residential developing company in Kenya. The company was formed to build innovative, cutting edge developments, drawing from the technical wealth of Homes Universal.

Our principal values are putting client interest first,

keeping commitments we have made, making sure everyone wins, doing whatever it takes to ensure success, valuing and respecting others, and ensuring safety guides whatever we undertake.

The firm hopes to dominate the country's development industry while ensuring that the best services are offered to all their potential clients.

"We aim to develop projects that are not limited to



SINO WOOD  
PRODUCTS

SINO WOOD PRODUCTS

SINO WOOD PRODUCTS. Sino Wood Products is a dynamic company specializing in the production and distribution of high-quality wood solutions, with a strong emphasis on sustainability and expert craftsmanship.

The company offers a diverse portfolio that includes hardwood flooring, premium plywood, and decorative wooden pieces designed to enhance both residential and commercial spaces. Committed to environmentally responsible practices, Sino Wood carefully sources its raw materials from sustainable suppliers to minimize environmental impact while maintaining superior product standards. By integrating advanced manufacturing technologies with skilled workmanship, the company ensures every product is durable, functional, and aesthetically refined. Sino Wood Products takes pride in delivering solutions that meet the evolving needs of architects, interior designers, contractors, and homeowners.

Their focus on precision, quality control, and customer satisfaction allows them to consistently exceed expectations. Through innovation, reliability, and eco-conscious production, Sino Wood Products continues to strengthen its reputation as a trusted leader in the wood products industry.



+254 721 325 902



True Value - True Wealth

## SOLIAN

### WHO ARE WE

Since its inception in 2011, Solian has grown consistently over the years in terms of both asset and client base. The wealth of experience and expertise accumulated has placed us on a higher pedestal to be able to offer superior services. Our pioneering initiative has set standards and has led the way for many to follow.

A combination of integrity, our experience dedication to our craft, professionalism, and reliability makes us the investment company of choice. We are growing, as we continue on our path of excellence.

### Our offering

- Development of quality affordable housing units in prime locations thereby bridging the gap of housing deficit in Kenya and plugging into the government's affordable housing program.
- Solian infills basic infrastructure and services and avails affordable development-ready, value-added plots on the buy and build concept.
- Undertaking master-planned project developments and gated communities.
- Availing co-working spaces and business incubation centers for business start-ups.

### Solian Business Centre

The Palm Breeze, 1st Floor | Links Road, Nyali

P.O Box 80045-80100, Mombasa - Kenya

Tel: +254 700 360 579 | +254 782 360 579

Email: info@solian.co.ke | Web: www.solian.co.ke



## STAR / ENGINEERS CONCRETE LTD

Engineers Concrete Ltd is a leading ready-mix concrete supplier strategically located along the Southern Bypass, Nairobi. We specialize in the production and delivery of high-quality ready-mix concrete for residential, commercial, industrial, and infrastructure projects of all sizes.

Our product range includes all standard concrete classes as well as specialized solutions such as SelfCompacting Concrete (SCC) and air-entrained concrete.

Quality is at the heart of our operations. Using tested and approved raw materials, a fully equipped laboratory, and a regularly calibrated testing equipments, we ensure every batch meets the highest performance and standards. Supported by a modern fleet of mixer trucks and advanced concrete pumping equipment, we provide reliable, efficient, and timely project delivery.

Over the years, Engineers Concrete has earned the trust of contractors, developers, and consultants through technical expertise, competitive pricing, exceptional customer service, and an unwavering commitment to quality and excellence.



## STIMA INVESTMENT

The core purpose of Stima investment is to create wealth for the members through innovative and most viable and secure ventures through prudent management of resources to secure maximum returns, growth and sustainability.

JUNE  
11-14  
2026

KICC



## STONECREST REAL ESTATE

*Discover. Dream. Dwell*

### About Us

Headquartered in Nairobi, Kenya, with a growing presence in Zanzibar and Dubai, we connect discerning clients with high-return real estate investments across some of the most dynamic markets in the world.

### Our Vision

To be the most trusted and dynamic real estate investment partner in Africa and beyond, empowering our clients to create lasting wealth through property.

### Our Mission

To provide world-class real estate solutions that combine deep market intelligence, personalized advisory, and exceptional service — ensuring every investment delivers tangible value and long-term growth.

### OUR CORE VALUES

#### Integrity

We build trust through honesty, transparency, and ethical practices.

#### Excellence

We deliver beyond expectations, with precision and professionalism in every engagement.

#### Insight

Our advice is rooted in data, research, and a deep understanding of emerging market trends.

#### Partnership

We walk with our clients every step of the way - from discovery to ownership and beyond.

#### Innovation

We leverage technology and creativity to identify new opportunities and deliver smarter investment solutions.



## SUNSET PARADISE APTS LTD (MBSA)

### Sunset Paradise Apartments , Serena , Mombasa.

The 8 acre Sunset Paradise gated community enclave, exclusive estate by design, offers a sanctuary of relaxation where you unwind by the pool as you look yonder on the abundant green areas. Located in Serena 500 M on the Tarmac road towards Serena Beach hotel, it is a reward of your success.

The design, construction and quality of finishing are details that make you want to own a sunset paradise apartment. We on our part are proud to make you own a treasure.

[www.sunsetparadisepartmentsmombasa.com](http://www.sunsetparadisepartmentsmombasa.com),  
[info@paradisepartmentsmombasa.com](mailto:info@paradisepartmentsmombasa.com)  
0712353535,



## SUPER MANUFACTURERS LTD

Super Manufacturers Ltd was established in 1987, in Nairobi, Kenya, with a mission to deliver high-quality fibre glass solutions across East Africa.

Over the decades, we have grown from humble beginnings-initially producing fibre glass translucent roofing sheets and polyester buttons-into an industry leader with a diversified portfolio.

Today, our facility on Isiolo Road in Nairobi Industrial Area is a hub of innovation and production, serving clients across Kenya and the broader East African region.

At Super Manufacturers Ltd, our mission is to provide



+254 721 325 902

#Transform  
YourLiving

[www.kenyahomesexpo.com](http://www.kenyahomesexpo.com)

**39<sup>th</sup> KENYA  
HOMES  
EXPO**

bespoke, high-performance fibre glass products that add real value to our clients' businesses - from custom fabrication to large-scale industrial solutions.

We envision a future where our fibreglass innovations enable sustainable infrastructure, safe water storage, and durable construction across East Africa.



### **SUPERIOR HOMES (KENYA) PLC**

Superior Homes (Kenya) PLC is a real estate developer, registered in 2004, who takes pride in being the pioneer of the master-planned gated community concept in East Africa, which is now recognized as the future for sustainable living in East Africa. Our key developments include Greenpark Estate in Athi River (163-acre master-planned gated community on Mombasa Road), Fadhili Retirement Village within Greenpark Estate, and Pazuri at Vipingo (105-acre master-planned gated and holiday community in Vipingo at the Kenyan Coast).

We intend to develop affordable comprehensive living that provide residents with access to amenities and customizable options to our clients. Development options include completed units, standard finish units and serviced plots.

#### **WHY CHOOSE SUPERIOR HOMES**

**TRUSTED PARTNER**



**SUMMIT VISTA  
(GOLDEN MANSION) – WESTLANDS,  
NAIROBI**

Golden Mansion is a 30-floor luxury residential development by Skypeak Kenya Limited, located along Muthithi Road in Westlands. Designed for modern urban living, the project features spacious one- and two-bedroom apartments with 5.4-meter high ceilings, offering a unique "villa in the sky" experience with abundant natural light and ventilation.

The development includes premium amenities such as a heated rooftop swimming pool, rooftop garden, restaurant, gym, landscaped spaces, and five levels of secure parking. The exclusive loft units on the top floors are now fully sold out, reflecting strong market demand. With prices starting from KES 7 million, Golden Mansion offers an attractive investment opportunity in one of Nairobi's most sought-after locations, known for high rental yields and long-term value growth.

**0116 335 555 / 0116 337 777**

**[marketing@skypeakkenya.com](mailto:marketing@skypeakkenya.com)**



**TATU  
CITY**

**TATU CITY**

Tatu City is a 5,000-acre new city on Nairobi's doorstep with homes, schools, businesses, a shopping district, medical clinic, nature areas, and recreation for more than 250,000 residents and tens of thousands of day visitors.

Tatu City's schools educate thousands of students daily, a range of homes suits all incomes, and more than 60 businesses thrive in the country's first operational Special Economic Zone.

Located 30 minutes from Westlands, Tatu City represents a new way of living and thinking for all

JUNE  
11-14  
2026

KICC

Kenyans in a live, work and play environment that is free from traffic congestion and long-distance commuting.

To learn more about the residential and industrial investment opportunities in Tatu City,.

Contact us at [info@tatucity.com](mailto:info@tatucity.com) or  
Call 0708 555 555.



## TETEZI PROPERTIES LIMITED

### *Where Vision Meets Timeless Living*

Tetezi Properties Limited is a premier real estate developer delivering high-end residential and commercial projects across Kenya since 2008. We specialize in strategically located developments that combine contemporary design, quality craftsmanship, and strong investment performance.

Our portfolio-including Cascading Ridge Views Estate, 41 on Ndege Road, Padmore Residences, Tetezi Towers, and Monreve Dulac-demonstrates our commitment to excellence and long-term value.

We offer investors access to high-growth opportunities driven by urban demand, ensuring sustainable returns and capital appreciation.

Tetezi Properties is your trusted partner in building timeless assets and unlocking enduring investment potential.



## SENTINEL GROUP (TRELLIDOR)

Trellidor Kenya secures homes and commercial premises with custom-made Trellidor security gates and burglar bars. Our trained consultants help customers choose the right products for their circumstances and budget. All our products carry a written warranty against defective workmanship, materials and corrosion.

### The range includes

- Trellidor Retractable security gates for doors and windows
- Trellidor Fixed burglar bar range for windows
- Trellidor Cottage Guard premium quality ugrlar bars
- Trellidor Rollerstyle aluminium shutters
- Trellidor Clear Guard see-through security screens

Contact Trellidor Kenya on 0710 710 710 or [info@sentinel-group.co](mailto:info@sentinel-group.co) or visit [www.sentinel-group.co](http://www.sentinel-group.co) and [www.trellidor.co.za](http://www.trellidor.co.za) for more information on the range.

**TSAVO**  
earn while you sleep

## TSAVO CITY

At TSAVO, Our overriding principle is to be the best in the world at disciplined partnerships, steadily growing profits per neighborhood defining building with great passion for experience of value. Right from the beginning, we positioned ourselves to be the most sought for real estate solutions. We are firm on our purpose which is to walk with our partner's towards financial independence through low risk high return real estate investments.

Visit us at our offices and let's build your success story.



+254 721 325 902

#Transform  
YourLiving

www.kenyahomesexpo.com

39<sup>th</sup> KENYA  
HOMES  
EXPO

#### TSAVO CITY

Park Place Office Block  
P.O. Box 15854-00509, Tel 020 529 3030  
Mob. 0700 081 605, 0721 560 879  
atyourservice@tsavoarchitects.co.ke  
www.tsavocity.co.ke



Dream. Live. Realize

**UPLUX REALTORS LTD**

**UPLUX REALTORS LTD** Redefining real estate in Kenya for investors and homeowners alike We connect ambitious investors and modern homeowners to high-growth opportunities, premium developments, and transformative property solutions. Built on trust, driven by insight, and powered by results, Uplux delivers more than property; we deliver strategy, confidence, and wealth creation. Our deep understanding of emerging markets positions our clients ahead of the curve, whether local or diaspora. We believe real estate is the bridge between vision and legacy. That's why every transaction is intentional, transparent, and designed to unlock long-term value. At Uplux, we are not just part of the market.

We are shaping its future.

#### Our Services

- Real Estate Advisory & Transaction Support
- Buying & Selling of Property
- Property Management Property Segments
- Apartments & Villas
- Residential & Agricultural Land
- Commercial Property

Call: +254 728 255 665 Email: sales@upluxrealtors.

com | info@upluxrealtors.com

*Guiding Individuals with Integrity,  
Creating Value Through Real Estate.*

**VASSAY TILE**

**VASSAY TILE**

Vassay tiles provides complete solutions for new home renovation and renovation of new houses. We offer the best plumbing LESSO, the best sanitary ware ARROW, and the best tiles GUANZHU to serve every family in Kenya.

Our products mainly include floor tiles, wall tiles, bamboo floors, wooden floors, toilets, hand wash basins, bathroom cabinets, steam rooms, water pipes and accessories. It is our goal to have a warm home in every Kenyan family.

It is our aim to serve each customer well. Providing the best materials is our core business philosophy. Welcome to vassay tile  
Headoffice: Mombasa road opp Airtel kellico complex  
2nd floor Nairobi

**Ngong road branch: Marsabit Plaza Shop Lo8**

**Ngong Rd. Tel: 0789283050 | vassaytiles@gmail.com**



**VERISPECT INSPECTIONS LIMITED**

Verispect Inspections Limited is a professional building and property inspection firm specializing in independent QA/QC, snagging, and pre-occupancy

JUNE  
11-14  
2026

KICC



*We Care. Always*

## VILLA CARE LIMITED

From humble beginnings Villa Care Ltd has evolved to become a powerhouse in Kenya's property development market. With the capacity of 200 staff members, Villa Care, which has become the household name in Kenya's property development sector focuses on the effective management and development of the residential and commercial properties.

### VISION

Nourishing acceleration, advancement and enhancement of virtues that propel the property world to excellence.

### MARKETING

Changing Real Estate market needs continuous innovative strategies to counteract the same. Villa Care's creative department is constantly improving strategies that offer satisfactory results to the market. To attain outreach in the steadily changing real estate market.



MORVARA

## WESTERN PALACE INVESTMENT LTD (MORVARA)

### Morvara Serviced Apartments

Morvara Serviced Apartments is a modern, hotel-style residential development by Western Palace Investment Ltd, located on Muthithi Road in Westlands, Nairobi. Designed as a living emblem of

verification services. Led by experienced architectural and construction experts, the company provides technical inspection and advisory solutions across residential and commercial developments. Verispect helps clients identify construction defects, workmanship issues, and compliance gaps, ensuring projects meet approved standards and are market-ready.

Their services cover construction phase inspections, defect management, property condition assessments, and technical due diligence-supporting developers, realtors, landlords, financial institutions, and property buyers in making informed decisions. With detailed reports that include defect analysis, severity grading, and actionable recommendations, Verispect plays a key role in protecting asset value and reducing costly rework.

Whether during construction or before occupancy, Verispect ensures quality, transparency, and confidence in every property transaction.

**Get in touch today via [inspector@verispect.pro](mailto:inspector@verispect.pro) or visit [www.verispect.pro](http://www.verispect.pro) to safeguard your investment.**



## WE DO BAMBOO

We Do Bamboo is the first and only professional manufacturer of bamboo composite materials in Kenya, combining Dutch engineering with Kenyan manufacturing excellence.

From the heart of East Africa, we produce high-performance decking, cladding, flooring, and architectural wall panels for global construction markets. Made in Kenya, Built for the World.

**WeDoBamboo / WeDoBambusa LTD**

**P.O. Box 1009 – 00502**

**Phone: +254 720 008 833**

**Email: [sales@we-do-bamboo.com](mailto:sales@we-do-bamboo.com)**

**[www.we-do-bamboo.com](http://www.we-do-bamboo.com)**



**+254 721 325 902**

elegance, the project features with 25-storey towers with 406 units comprising studio, one bedroom, two bedroom, and three-bedroom apartments with DSQ. Expected for completion in December 2028, Morvara targets urban professionals and real estate investors seeking premium living and strong rental returns.

Residents will enjoy world-class amenities including a sky-view heated infinity pool, rooftop restaurant and bar, gym, spa, yoga room, concierge services, ample parking, backup power, borehole, and 24-hour security. Strategically positioned near major malls, hospitals, five-star hotels, corporate offices, and key transport links, Morvara benefits from Westlands' high demand for serviced apartments.

Call to Action: For inquiries, site visits, or investment opportunities, contact +254 741 676 883 / +254 112 348 888, email sales.westernpalace2024@gmail.com

, or follow @morvara.serviced on Instagram and TikTok, and Morvara Morvara on Facebook.



**WIRE PRODUCTS LIMITED**

**WIRE PRODUCTS LTD**

WIRE PRODUCTS LIMITED ATHI RIVER ROAD, OFF ADDIS ABABA ROAD, INDUSTRIAL AREA. P.O. BOX 18281-00500, NAIROBI- KENYA TELEPHONS: 0207909208 | MOBILE: 0723 860 962/0733 756 073 E-mail:saleswireproducts@wireprod.net/ infowireproducts@wireprod.net Website: www.wireprod.net

Wire Products Limited is a manufacturer and supplier of wire and fencing products in Kenya. We provide strong, reliable, and affordable products for residential, commercial, industrial, and agricultural use. Our focus is on quality, consistency, and timely supply. We work

to ensure every product meets the required standards and serves its purpose effectively.

Our Products Wire Products Limited manufactures and supplies Anti-Climb Fencing, Heavy Gauge Chainlink, PVC Coated Chainlink, and Grassland Fence for security and perimeter protection. We also produce Barbed Wire, Galvanized Wire, and Binding Wire for fencing and construction use. In addition, we produce and supply Chicken Wire, Poultry Mesh, Galvmesh, and high-quality Nails.

Custom wire products are available based on customer requirements. Our Vision To be the most preferred wire and wire products manufacturer within the East African region. Our Mission To satisfy customers within the East African region by providing quality, innovative, and affordable products.

Why Choose Us Consistent product quality  
Competitive pricing Reliable supply Professional customer support Experience in the wire manufacturing industry



**MAYLAN PARK**  
*Residence*

## **MAYLAN PARK RESIDENCE**

Located along Mander Road in Kileleshwa, Maylan Park Residence is a modern off-plan development designed for comfortable living and strong investment returns. The project features three elegant 20-floor blocks, thoughtfully planned to enhance privacy and space, with completion set for December 2027. On average, only five households share two high-speed elevators, ensuring convenience and minimal waiting time.

Choose from 1, 2, 3, and 4-bedroom apartments, all finished to high standards with fully fitted kitchens and

JUNE  
11-14  
2026

KICC

premium features. Prices start from KSh 7.0M, with flexible payment options including cash and interest-free installment plans (20% deposit, up to 2 years).

Residents will enjoy top-tier amenities including a swimming pool, gym, rooftop lounge, landscaped gardens, borehole, backup generator, community shop, ample parking, and 24/7 security.

Set in a serene, green environment next to Kenya High Forest, near Kenya High School, Yaya Centre, GTC, and minutes from the CBD, offering convenience and long-term value



**KAPS LTD**

KAPS LTD is East Africa's premier property technology company, delivering innovative solutions that enhance security, access management, and parking operations for residential, commercial, and mixed-use developments.

By merging cutting-edge hardware with intelligent software, KAPS transforms how people navigate modern facilities. Through flagship systems like KAPS Sentinel, a comprehensive security and visitor management platform, KAPS streamlines resident access, visitor registration, and incident reporting with real-time visibility.

Complementing this is KAPS Proximus, an intelligent parking management solution designed to automate vehicle access, occupancy monitoring, and revenue collection. Together, these solutions create smarter, safer, and more connected communities.

Spanning major airports, malls, hospitals, and residential hubs, KAPS simplifies property management, optimizes resources, and delivers

seamless experiences for both property managers and end users.

**+254 709 899 000**

**contactcentre@kaps.co.ke**

**www.kaps.co.ke**

**Kindaruma Road, Nairobi**



**TCPAK**

The Town and County Planners Association of Kenya (TCPAK) is the lead registered and approved professional association in Kenya for town planners, land use planners or physical planners.

In line with the Constitution of Kenya 2010, TCPAK's motto is "Better Towns, Counties and Country". The association partners in Kenya include KEPISA, KPDA, and KGBS.

In the international scene, TCPAK is an accredited UN-Habitat agenda partner (NGO in consultative status) and other partners include the International Society of City and Regional Planners (ISOCARP/The Netherlands), International Coalition of Sustainable Cities and Territories (ICOSCAT, France), Royal Institute of Chartered Surveyors (RICS, UK), and South African Council for Planners (SACPLAN).

**AZIZTECH**

**AZIZTECH LIMITED**

Aziztech Limited is a leading ICT solutions provider with over 13 years of experience in delivering innovative and impactful digital solutions. The



**+254 721 325 902**

company specializes in developing customized systems that enhance operational efficiency, transparency, and decision-making for government and private sector clients alike.

With a proven track record of successful implementations, Aziztech Limited continues to empower organizations with technology-driven solutions, making it a trusted partner in Somalia and Kenya. History Formerly known as Somali IT Solutions (SOMITSO), Aziztech Limited evolved as the business expanded and its mandate grew.

To reach both national and international partners and clientele, the company partnered with Legacy Capitals (Som) Ltd, its parent holding company, and subsequently changed its name to Aziztech Limited.

Today, Aziztech serves as the ICT backbone of Legacy Capitals (Som) Ltd, integrating all business entities within the holding company while boasting an impressive roster of clients across various sectors.

**Transnational plaza, 2nd & 3rd floor**  
**P.O Box 25712-00100 Nairobi**  
**Tel. +254 796 549 170**  
**info@aziztech.com www.aziztech.co**



## STELLAR BAY LIMITED

Stellar Bay Limited is an international real estate developer and investment company headquartered in Beijing, China, with a regional presence in Kenya and operations across Africa and Asia. Backed by experienced international shareholders and a leadership team with a proven track record in large-scale developments, the company has contributed to projects totaling over 5 million square

meters worldwide.

Our flagship development, Stellar Bay Nairobi, is a landmark mixed-use residential project located along Waiyaki Way in Westlands. Spanning approximately 62,000 square metres, it comprises 697 residential units across two iconic towers Block A, Block B offering studio, one-bedroom, one-and-a-half-bedroom, and two-bedroom residences.

Designed to international standards, the development features fully furnished apartments, premium lifestyle amenities, retail conveniences, swimming pools, conference and banquet facilities, and seven landscaped sky gardens. Stellar Bay combines quality, sustainability, innovation, and reliability to deliver exceptional living experiences and long-term investment value in Nairobi.



## STATEN PROPERTIES COMPANY

We are a dynamic real estate and development company specializing in the sale of fully serviced land and quality construction solutions. Our focus is on providing investors, homeowners, and developers with strategically located properties that are ready for immediate development, complete with essential infrastructure and amenities.

With ongoing projects in Nanyuki and Kajiado, we are committed to creating sustainable, high-value communities that offer excellent investment potential and long-term growth. Guided by professionalism, integrity, and customer satisfaction, we strive to make land ownership and property development accessible, secure, and rewarding for our clients while contributing to the growth of Kenya's real estate sector.

**SECURITY 24**

ROUND THE CLOCK SECURITY

The Intelligent  
Answer to Your  
**SECURITY  
CHALLENGES**

YOUR HOME  
SECURITY  
*Solutions*

Visit our stall at  
The 39th Kenya Homes Expo on  
**June 11th - 14th, 2026 @ KICC**

Call us **0721 325 902**

6th Flr, New Rehema House, Rhapsa Rd - Westlands  
P.O. Box 66331 - 00800, Nairobi - Kenya  
[info@security24.co.ke](mailto:info@security24.co.ke) | [www.security24.co.ke](http://www.security24.co.ke)

# Luxury LIVING

Something For Everyone

For **over 20 years**, Superior Homes (Kenya) Plc has pioneered East Africa's open-plan gated communities, delivering master-planned estates defined by quality and long-term value.

Our flagship development, Greenpark Estate, showcases this legacy, with **more than 700 homes delivered** within a vibrant, well-planned community.

**GREENPARK ESTATE**

## OUR CURRENT PROJECTS INCLUDE:

### THE ORCHARDS AT NORTHLANDS



3, 4 & 5 Bedroom Units

Installments **Upto 12 Months**

UNITS FROM:  
**KES 27.08M**

### LUKENYA PLAINS AT ATHI RIVER



3 & 4 Bedroom Units

Installments **Upto 12 Months**

PLOTS FROM: | UNITS FROM:  
**KES 9.48M | KES 18.18M**

### PAZURI AT VIPINGO



2, 3 & 4 Bedroom Units

Installments **Upto 12 Months**

PLOTS FROM: | UNITS FROM:  
**KES 9M | KES 19.78M**

### SUNSET CREEK KILIFI



Installments **Upto 24 Months**

PLOTS FROM:  
**KES 4.48M**

**SECURE YOUR  
INVESTMENT  
TODAY!**



**MORTGAGE FINANCING  
AVAILABLE FROM:**



Call/WhatsApp: **+254 713 888 333**

Email: **sales@superiorhomes.co.ke**